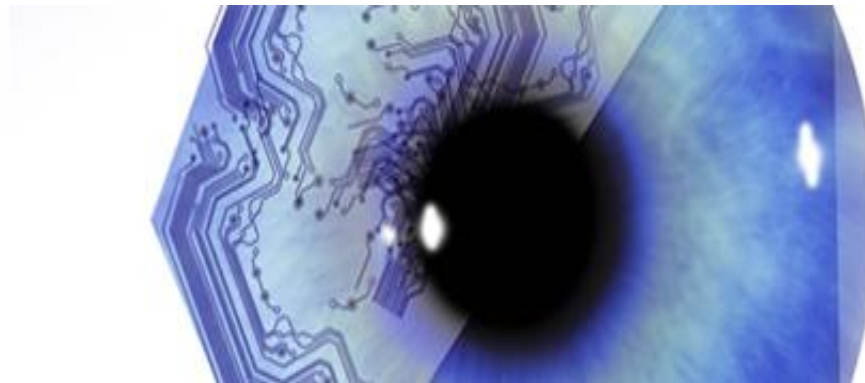


# EDEE: EPFL Doctoral Program in Electrical Engineering



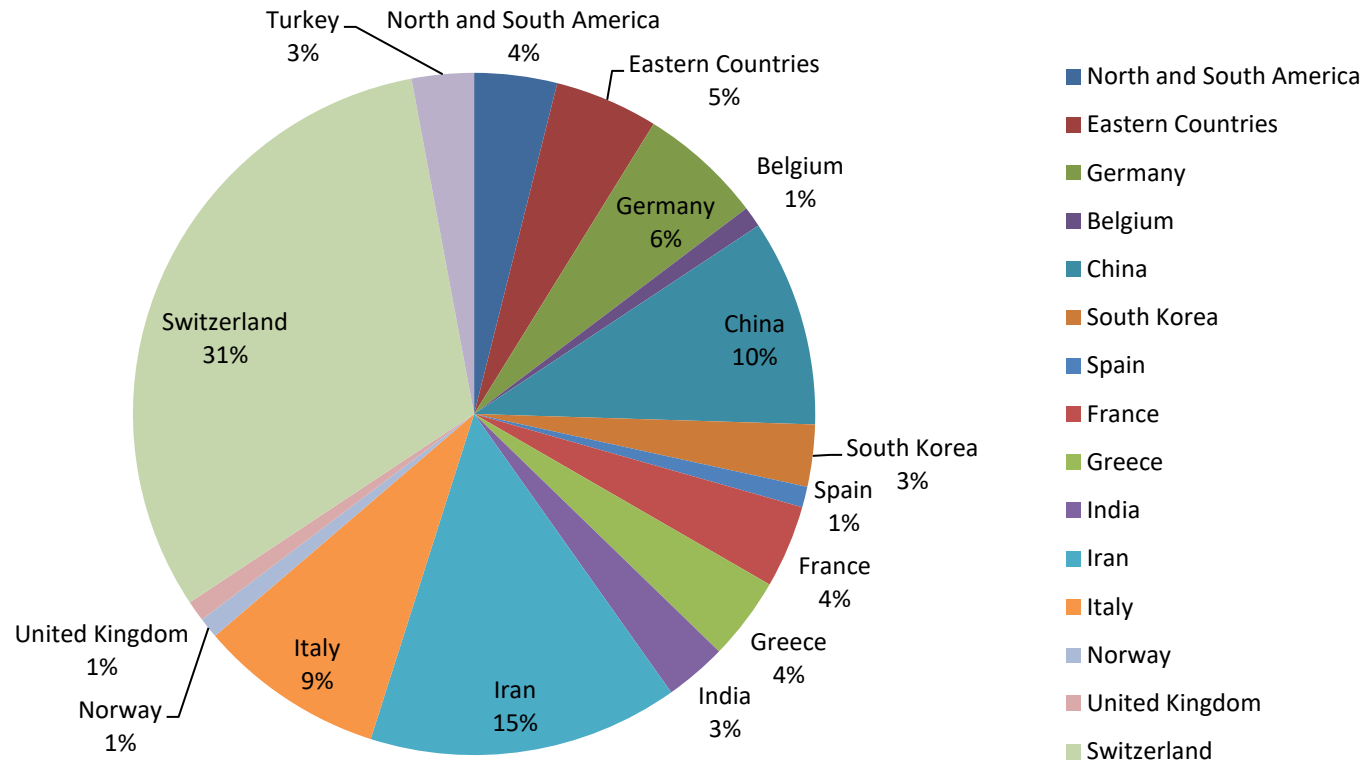
# Research domains

- Micro/Nano electronics, circuits, systems and computer engineering
- Information technologies, automatic control, signal, image, and video processing
- Machine learning and data science
- Electrical energy: systems and components
- Wireless Communications, Electromagnetics and Wave Phenomena

## A few figures

- 3-5 years PhD studies, in English
  - 60+ affiliated research laboratories
- 182 PhD students (4th largest doctoral program at EPFL), 20 % female
- Highly competitive program (10% acceptance, out of 400 applications every year)
- Admission pre-requisite: 4-year BS or better MS programmes

# Where do our students come from?



# Programme Requirements

- Qualifying 60 minutes-candidacy exam at the end of the first year (research plan)
- 20 % TA time
- External and internal courses to reach 12 credits at end of PhD studies.
- Annual reports

Thank you!